

PARADYNAMIX

## Grimm Scientific Industries Case Study

### GRIMM SCIENTIFIC INDUSTRIES

Grimm Scientific Industries is a sports medicine equipment manufacturer that designs, engineers, and maintains products which are proven to perform, cost effective, and aesthetically pleasing for all levels of athletics.



#### BUDGET

\$100,000 - \$250,000

#### SERVICES PROVIDED

Programming

#### ABOUT PARADYNAMIX

Paradynamix is a one-stop technology support and programming innovation resource, working tirelessly to support our clients and partners in their tech-related needs. We take the time and effort to consider the different dimensions of your problem, and apply the same philosophy to our solutions. You need an answer that not only works for you today, but tomorrow and the days after. We provide you with that answer.

### BUSINESS CHALLENGE

Until the early 2000's, Grimm Scientific Industries ran their business off of spreadsheets, expending a great deal of time and money on manual entry and report creation. Grimm foresaw business growth where the manual system would be too ineffective and sought to find a software that would automate the company and provide tools to keep the company in a state of control.

### OUR SOLUTION

A scalable ERP software solution was built from the ground up to service Grimm Scientific Industries current needs and adapt to needs for the future. The system was designed to help automate their entire operation, retaining the current business process Grimm Scientific Industries knew but minimize time spent on manual information entry.



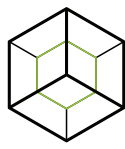
227 Third Street  
Marietta, OH 45750



866.280.2237



info@paradynamix.com  
www.paradynamix.com

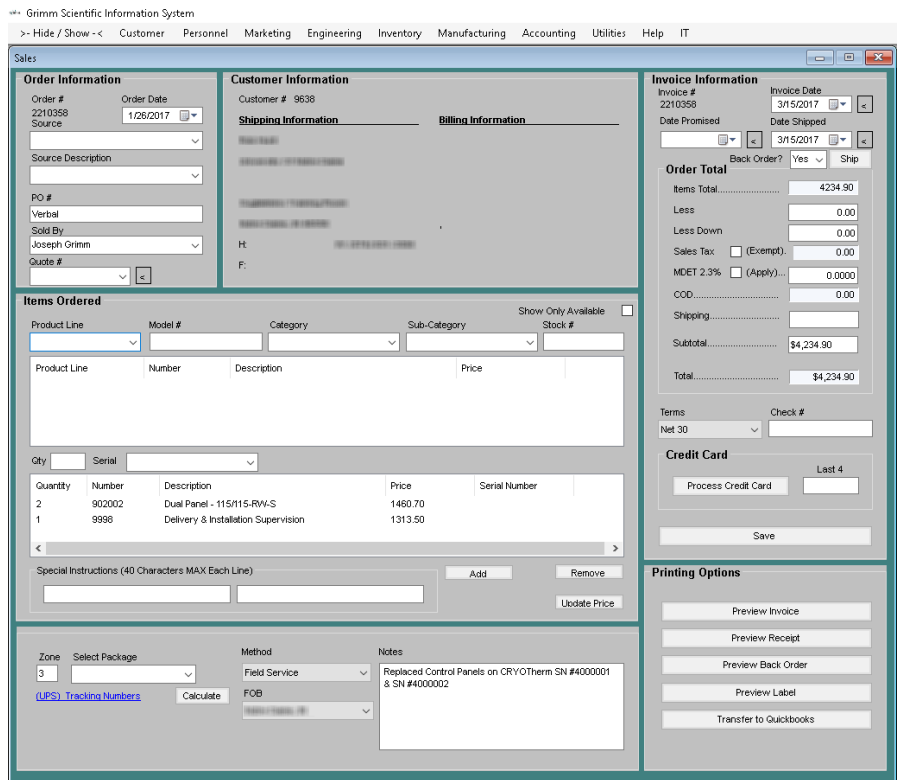


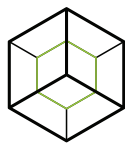
## Grimm Scientific Industries Case Study

### RESULTS

Grimm Scientific Industries still runs off their Paradynamix system ten years later with support to improve and adapt the software as needs arise. Since the initial implementation of the system, Grimm Scientific Industries has quadrupled in size, taking advantage of time that has been freed up to build and grow the company.

Their entire invoicing process with credit card processing is automated and integrated into their system for more efficient accounting practices.





## Grimm Scientific Industries Case Study

Utilizing a dashboard system, employees can see the exact priorities of the company, incoming orders, complaints, and alerts.

Grimm Scientific Information System

> Hide / Show -< Customer Personnel Marketing Engineering Inventory Manufacturing Accounting Utilities Help IT

Leith Stetson

**Grimm Information System** Calculator Change Password Log Out

Import Inv. Total Backorder Dollars: \$457,077.

**Backorders**

Invoice #	Order Date	Date Promised	Customer #	Customer	Company
2210348	1/19/2017		23876	CRYOTHERM	CRYOTHERM
2231206	1/2/2018		19758	CRYOTHERM	CRYOTHERM
2210358	1/26/2017		9638	CRYOTHERM	CRYOTHERM
2231220	1/9/2018		18053	CRYOTHERM	CRYOTHERM
2231060	10/11/2017		18015	CRYOTHERM	CRYOTHERM
2231114	11/2/2017		21162	CRYOTHERM	CRYOTHERM
2231117	11/3/2017		24289	CRYOTHERM	CRYOTHERM
2210283	11/30/2016		19016	CRYOTHERM	CRYOTHERM

**Open Complaints**

Date	Model #	Serial #	Customer	Name	Company	Injury Y/N
7/21/2016 12:00...	4950	4950001	9308	CRYOTHERM	CRYOTHERM	No
9/30/2016 12:00...	4140	4140005	21224	CRYOTHERM	CRYOTHERM	No
12/21/2016 12:00...	4540	4540001	9055	CRYOTHERM	CRYOTHERM	No
2/13/2017 12:00...	1200	1200077	23876	CRYOTHERM	CRYOTHERM	No
6/28/2017 12:00...	4126	4126001	21869	CRYOTHERM	CRYOTHERM	No

**Trend Alerts**

Investigation #	Product Line	Description
33	CRYOTerm	CRYOTerm
5	CRYOTerm	CRYOTerm
10174	CRYOTerm	CRYOTerm
31	CRYOTerm	CRYOTerm
43	CRYOTerm	CRYOTerm
51	CRYOTerm	CRYOTerm

Their entire manufacturing process, including exact cost accounting down to the part level and ECO (Engineering Change Order) management, is streamlined and automated through the system.

Manufacturing Sequence #4011 CRYOTerm Dual Console

Operation Number Week Operation Work Center Hours

Save Clear Delete

**Manufacturing Sequence**

#	Week	Operation	Work Center	Hours
1	1	CRYOTerm	#55 Metal Fabrication	10
2	2	CRYOTerm	#55 Metal Fabrication	10
3	3	CRYOTerm	#56 CRYOTerm Assembly	10
4	3	CRYOTerm	#56 CRYOTerm Assembly	10
5	3	CRYOTerm	#56 CRYOTerm Assembly	10
6	3	CRYOTerm	#56 CRYOTerm Assembly	10
7	4	CRYOTerm	#56 CRYOTerm Assembly	10
8	4	CRYOTerm	#56 CRYOTerm Assembly	10
9	4	CRYOTerm	#56 CRYOTerm Assembly	10
10	4	CRYOTerm	#52 Electronics Assembly	10
11	4	CRYOTerm	#56 CRYOTerm Assembly	10
12	4	CRYOTerm	#56 CRYOTerm Assembly	10
13	4	CRYOTerm	#56 CRYOTerm Assembly	10
14	5	CRYOTerm	#59 Corian Fabrication	10
15	5	CRYOTerm	#59 Corian Fabrication	10
16	6	CRYOTerm	#59 Corian Fabrication	10
17	6	CRYOTerm	#70 Installation	10

Preview Report Clipboard View Parts List Total Hours

**Steps**

Step	Desc.

Down Up Refresh Create Step

**Skills**

Skill

Add Skill Remove Skill

